

HS 1
STAMPS

1Ae



1Ba



+1Ba



1Ca



HSI

1Cb



2Ac



3Aa



②

HSI

3Bb



3Ca



4Ab

(B?)

③



HS I

5Aa



5Ac



5Ad



(4)

HSI

6Aa



7Aa



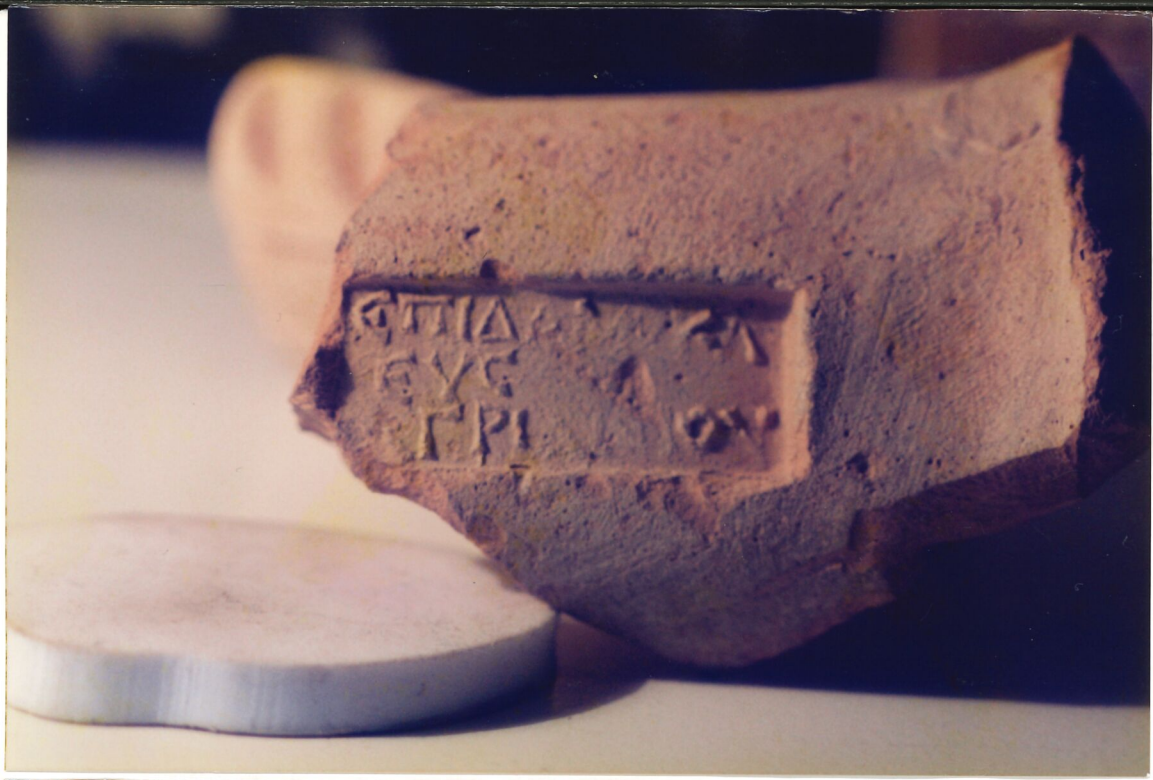
8Aa



⑤

HSI

9Aa



10Aa



11Aa



⑥

HS I

12Aa



13Aa



14Aa



⑦

HSI

15Aa



15Ab



16Aa



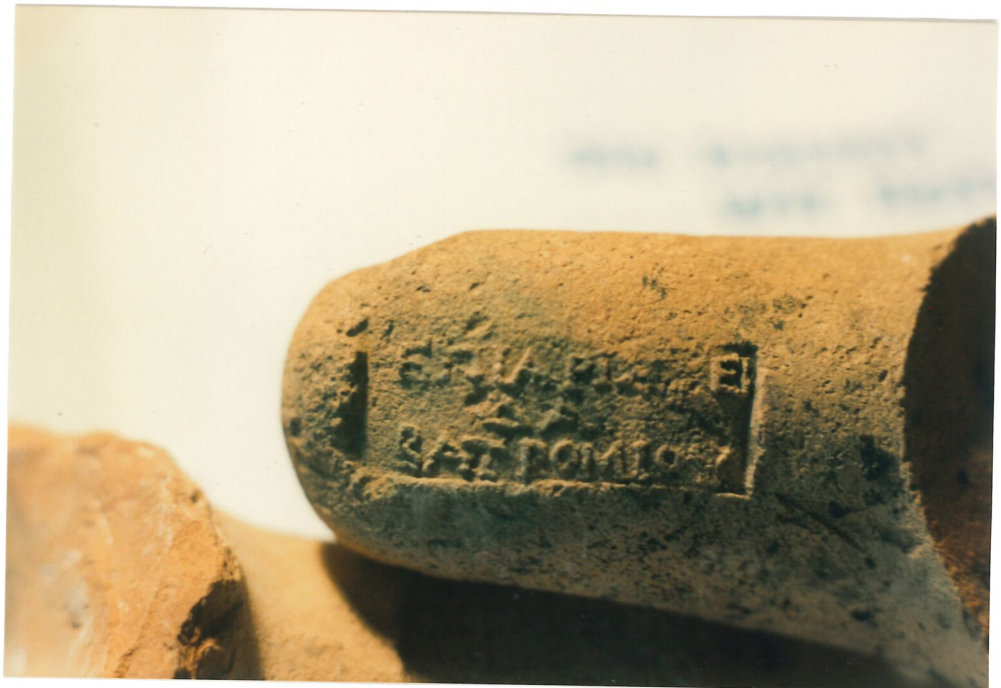
HS I

T24

17Aa



18Aa



19Aa



⑨

HSI

HS I -20Aa

20Aa



21Aa



22Aa



(10)

HS I

23Aa



24Aa



25Aa



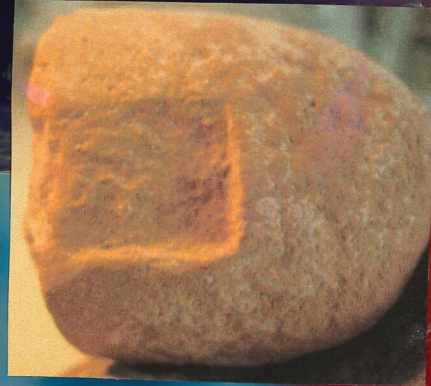
Ⓜ

HSI

26Aa



+26Ba?
or 32Aa



27Aa



28Aa



HS I

28Aa
subsidiary
stamp



29Aa
Subsidiary
stamp



30Aa



HS I

31Aa



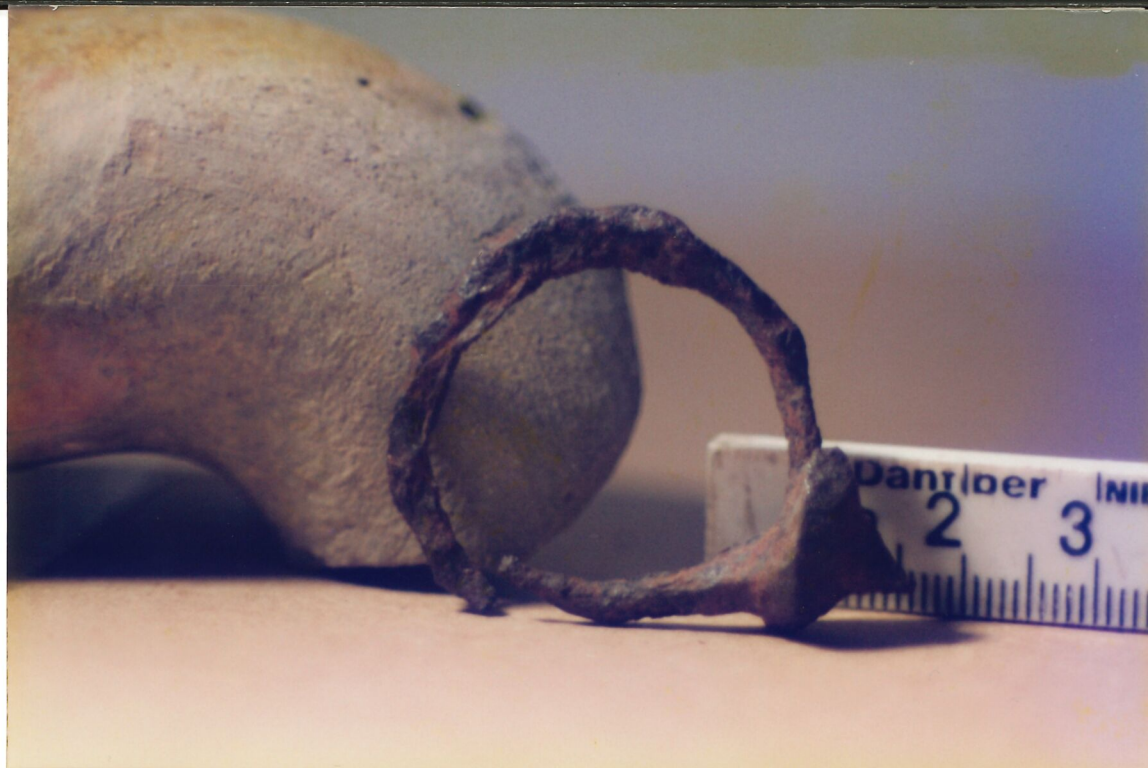
32Aa

or

+26Ba

HSI

Fibula, forged iron (-bronze)



HS I

More than just clues

- A part of a collapsed Amphora. Parts of the belly slid over each other while being heated in the kiln ①
- Fragments of the kiln ②
- fragments of melted earthware and clay ③
- a stamp of a so far unknown kind (type 4A) ④



EVIDENCE 2

HS I

Failure from the local kiln.
Fragment, broken during baking. Broken edge partly melted and covered with gas bubbles

Evidence for the local character of the potter:

ATTINAS

He might have been Rodian, but he worked at Lefkos on Karpathos

Also as evidence see HSI*3Db-description



HSI 2Ae 'ATTINAZ'



HSI 2Ae 'ATTINAZ'



HSI 2Ae 'ATTINAZ'

HS II

Another evidence
from the Local kiln:
Explosion and
melt-down from
an amphora-handle
failures like this
could never have
been imported!

